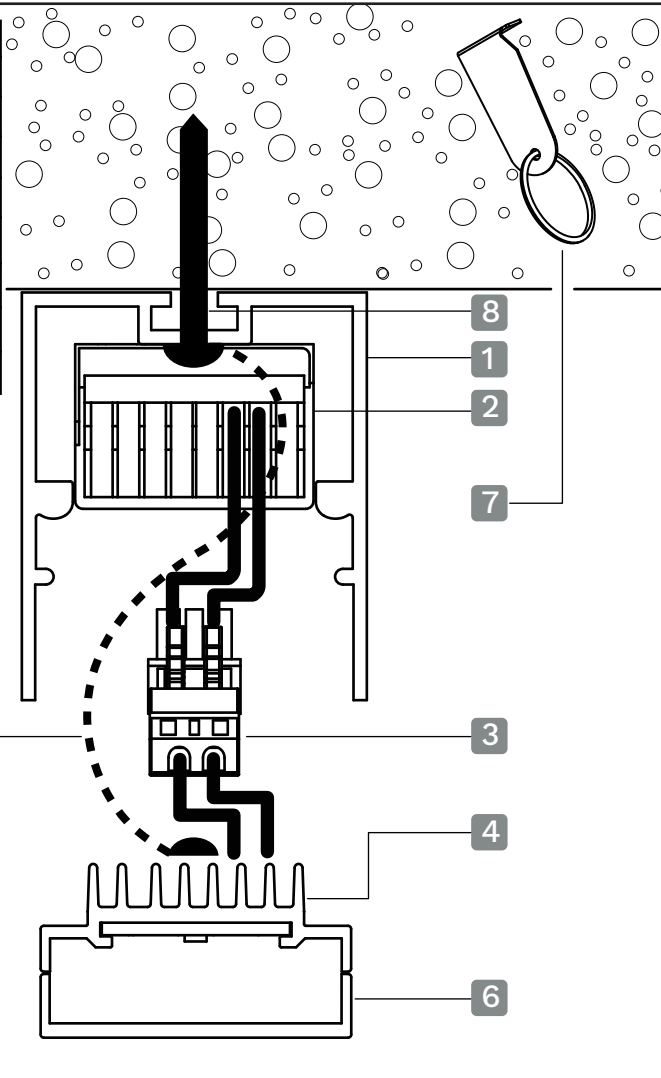
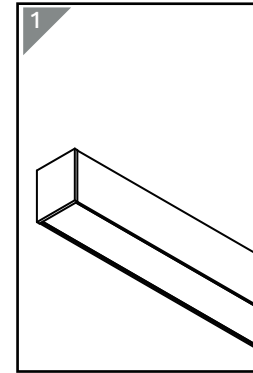


# GS2 - Installation/Service Instruction

Item	Title
1	GS2_System
2	Driver
3	Connector
4	Geartray
5	Cover
6	Diffuser
7	Remover tool
8	Mounting screw (by others)

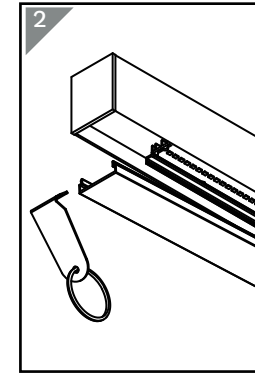


Important note: Install/service by licensed/authorised installer only.

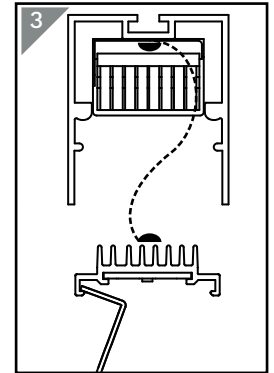


1  
Ensure unit is safe and secured before proceeding

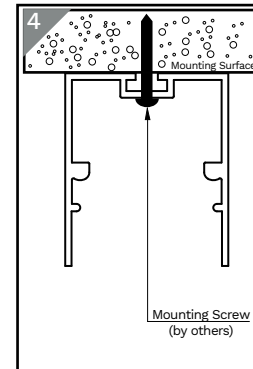
Note: Make sure power is disconnected



2  
Use Austube Schröder remover tool to remove diffuser

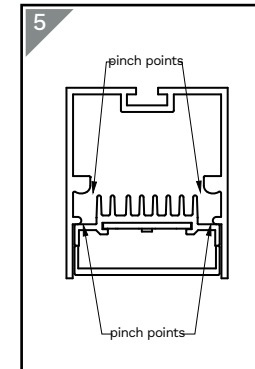


3  
Carefully use Austube remover tool to remove geartray

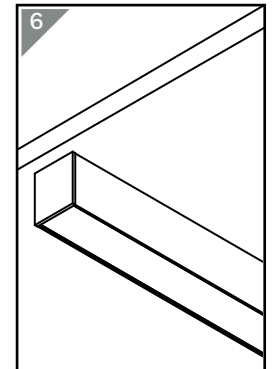


4  
Drill & secure mounting screw to the surface through the luminaire as shown

Note: Refer to layout plan for mounting location



5  
Retrace steps 3 & 2  
Make sure all cables are cleared from pinching and geartray is snapped back in



6  
Make sure system is reconnected and secure to complete